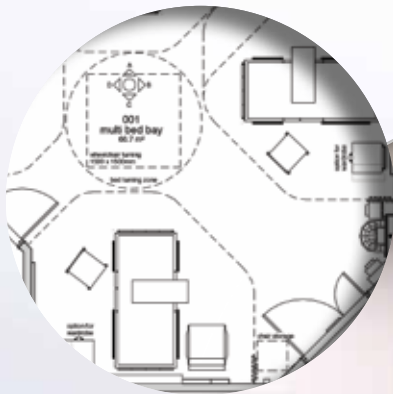


ProCure21+

Repeatable Rooms

Four-Bed Multi-Bed Bay Showroom

Diamond arrangement with
en-suite shower and WC rooms



Welcome

to the ProCure21+ Repeatable Four-Bed Multi-Bed Bay showroom
and its host Static Systems Group PLC

The showroom forms part of the Static Systems Design and Innovation Centre, replacing a facility that had existed at Wombourne for over 10 years.

Utilising the diamond arrangement multi-bed bay, two bed bays are fitted with equipment to the ProCure21+ Repeatable Room standard, with two further bays that showcase alternative components and provide space to feature the latest product innovations.

The showroom and innovation centre has been developed by Static Systems in association with many of the ProCure21+ Standard Component suppliers as well as other suppliers, as noted overleaf.



Clinical benefits

- 3600mm x 3100mm bed space reflects rigorous research by the MARU and HACIRIC, indicating this space to be optimal in accommodating a full range of clinical activities taking place at the bedside and in the individual's bed space, together with space for operating of equipment at the bedside;
- Two clinical hand wash stations located in a highly visible and convenient area with a shelf above the basin on which staff may place papers, etc while washing their hands;
- Good daylight with sightlines to outside space from the bedhead, providing a brighter, more therapeutic environment;
- Family space, including the option of an overnight stay for a relative or friend;
- Space for artwork within the room;
- Multi-Bed Bay includes an en-suite shower and WC and separate en-suite WC. Bed locations are designed to avoid direct sightlines into the WC from the bed space;
- En-suite shower room is spacious enough to accommodate a bariatric patient.





Key features

- Head to head distance: at least 3600mm
- Full assistance in en-suite shower/ WC
- Observation from corridor
- Reduced bed to en-suite distance
- En-suite access maintained when bed bay curtains closed
- Artwork
- Daylight factor (room average) c2%

Diamond arrangement Four-Bed Multi-Bed Bay

providing a balance of small bay footprint and corridor wall length, while increasing the bedhead-to-bedhead and bed-centre-to-bed-centre distances plus observation of all beds from corridor and shortest distances to en-suites as well as space for artwork

Bedroom NIA 58.5sqm

En-suite NIA 6.3sqm

En-suite WC NIA 1.9sqm

Corridor run 2500mm

IPS 1.8sqm

Comparison table	Design manual 2011	Traditional layout	Diamond layout	'T' form layout
Bed area nia	64.0sqm	61.3sqm	58.5sqm	58.4sqm
En-suite sh/WC nia WC nia	6.5sqm 2.0sqm	6.3sqm 1.9sqm	6.3sqm 1.9sqm	6.3sqm 1.9sqm
Corridor length	7700mm	7400mm	2800mm	11150mm
Views out (equiv. total window size)	Not stated	3900 x 2000 (3 windows)	3600 x 2000 (MBB corner location)	4700 x 2000 (2 corner windows)
Head to head distance	3600mm	3600mm	3700-5000mm	3600-4400mm
Observation from corridor	2 of 4	3 of 4	4 of 4	2 of 4
Average distance bed to en-suites	5300mm	5050mm	3950mm	5050mm
Range of distance to en-suite sh/WC	3.8 - 7.2m	3.9 - 6.3m	2.5 x 5.5m	2.6 - 6.9m
Full assistance in en-suite sh/WC	✓	✓	✓	✓
Artwork	✗	✓	✓	✓
Daylight factor (room average)	~2%	~2%	<2%	>2%
Comparative cost factor savings	1.00	~0.96	~0.93	~0.95

Balfour Beatty

GallifordTry

IHP

Interserve

KIER

WILLMOTT DIXON



Standardised Component suppliers

Component and supplier	ProCure21+ benefits	
Bedhead services trunking Static Systems Group	ProCure21+ standard specification, including patient USB charging points; 2-year warranty; quick delivery; reduction in client approval time; savings up to 25%	
Ceilings, suspended Rockfon UK <i>(installed by Clark and Fenn)</i>	30-year system warranty; fixed price system held until the end of 2015 with guaranteed maximum increase for 2016; savings up to 26%	
Ceiling-mounted patient hoists ArjoHuntleigh (Getinge Group)	Savings up to 25%, fixed until the end of December 2016; BIM models; fixed installation rates across mainland England; no minimum order quantity	
Doorset packages, internal Datim Supplies	ProCure21+ standard specification; 15-year warranty for combined doorset and ironmongery; fixed price to end 2015; savings up to 6%	
Flooring and hard wall protection Tarkett Limited <i>(installed by Cutting Corners, subfloor preparation by Instarmac)</i>	Fixed prices to end 2015; capital- and revenue-focused options; and savings up to 35% on hard flooring and 22% on soft flooring	
Lighting Whitecroft Lighting	5-year warranty as standard; fixed rates for the framework period to 2016; savings up to 27% on traditional fluorescent and 24% on LED luminaires	
Paint ICI Paints AkzoNobel	Fixed net prices until December 2016; savings up to 30% over typical market prices	
Privacy screens Silentia UK	An alternative option/enhancement; 2-year warranty; fixed prices to December 2016; savings up to 20%	
Sanitary ware Armitage Shanks/Pipe Center	Warranty from lifetime to two years, depending on product; fixed price until December 2016 via Pipe Center only; savings up to 40%	
Windows Britplas	2 year warranty; pricing fixed until October 2016; savings of up to 19%; Britplas Assist Emergency call out service	

Other components:



Integrated panel system
Total Laminate Systems



Furniture
Teal



Walls & Partitions
Siniat

Art in Site

Artwork
ArtinSite



Bed bumpers
C-S Acrovyn



Towel and gel dispensers
Kimberly-Clark Professional



Department
of Health

ProCure21+

Room 1N10, Quarry House, Leeds LS2 7UE

0113 254 5851 | p21helpdesk@dh.gsi.gov.uk | www.procure21plus.nhs.uk